



CL600



CL610



CL620

**Front and Back Plates**

Front and back plates only for use with existing mortice latch or lock. The existing lock must have either a fixing hole 22mm (7/8") below follower (spindle) or two horizontal holes either side of the follower 38mm (1 1/2") centres.

**Mortice Latch**

Heavy-duty tubular mortice latch locks. Stainless steel latchbolt head with 'anti-shim' deadlocking plunger, 8mm (5/16") follower. The outside lever handle will retract the latch after a correct code is entered. The spring loaded latchbolt will lock automatically when the door is closed.

**Mortice Lock**

Euro profile mortice sash lock with deadbolt and latchbolt. Complete with double cylinder to control deadbolt and to retract latchbolt. With the deadbolt locked it denies access to a code user. The split follower enables the inside lever to retract the deadbolt and latch to prevent accidental lock in when the deadbolt is thrown. Supplied with double Euro profile cylinders with two keys. The key will open the door for management functions.

**For further product model options see price list.**



OPTIONS

**Latch Options:**

2 latch options: 60mm (2 3/8") backset requires 25mm (1") hole, 82mm (3 1/4") deep. 70mm (2 3/4") backset requires 25mm (1") hole, 92mm (3 5/8") deep.

**Code Free Option:**

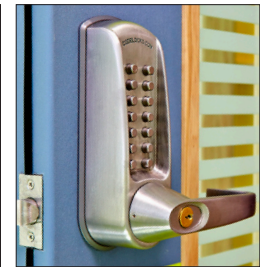
The outside lever will retract the latchbolt without using a code.

**Back to Back Option (BB):**

Two coded plates for installation on both sides of the door. Provides coded access in both directions.

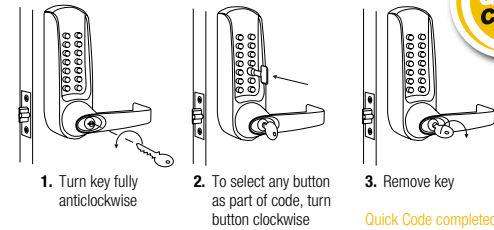
**Panic Kit Option (PK):**

Coded front plate with extra long spindle provided to work with most single point panic pads or bars.



**Code Change Method**

Quick Code change on the door using a key.

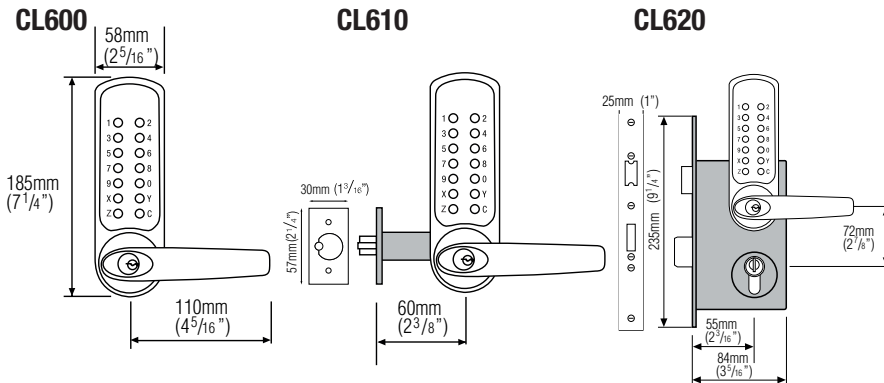


Quick Code completed!

TECHNICAL SPECIFICATIONS

Options	12 available
Spindle Type	Two part 8mm (5/16") spring loaded spindle
Material	Zinc Alloy
Door Thickness	35mm – 60mm (1 3/8" – 2 3/8")
Buttons	14 stainless steel buttons
Non Handed	Locks will fit doors hung on the right or left
Fitting Options	Vertical
Finish	PVD (Physical Vapour Deposition) hardwearing low maintenance finishes BS (brushed steel) and PB (polished brass)
Keyed Alike	Locks can be supplied Keyed Alike on request
Key Override	As standard
Key Cylinder Change	As standard
Codes	8,191 non sequential codes available
Code Storage	Single Code
Standards	Codelocks Fire Kit Packs can be fitted to latch locks for 30 or 60 minute fire doors. Tested in accordance with: BS EN 1634-1:2008 Tested to Grade 2 ANSI A156.2 UL/ULC Fire Rating 3 hours (when fitted with US fire kit)
Suitable For	Internal and external use

PRODUCT DIMENSIONS



\*Codelocks mechanical locks will be repaired, serviced or replaced free of charge if they develop a manufacturing fault. Faults caused by misuse, abuse and/or poor fitting are not covered by the guarantees.

